

Florida Hospital For Children



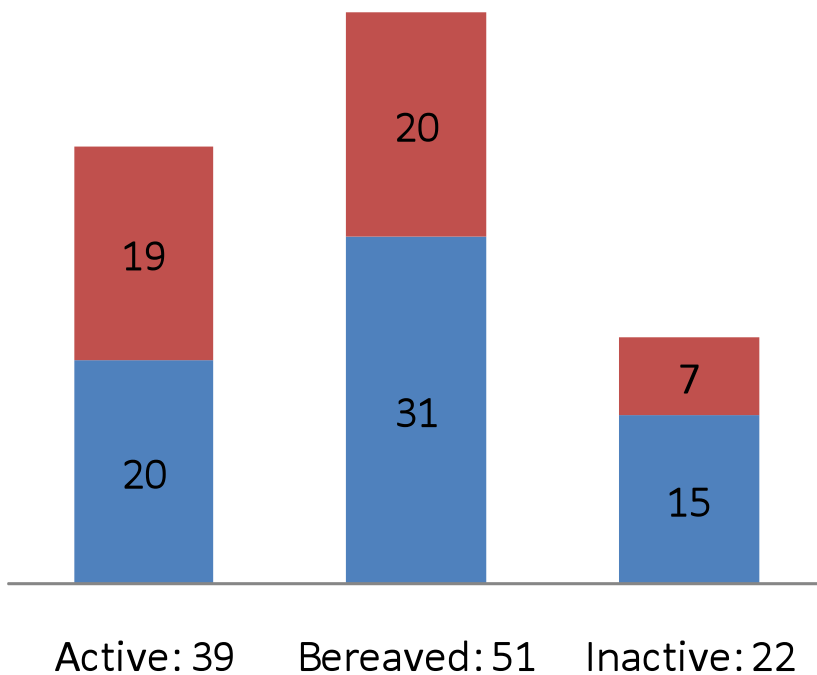
CURRENT PEDIATRIC PALLIATIVE CARE PROGRAM OVERVIEW

Current Children's Care Team Patients



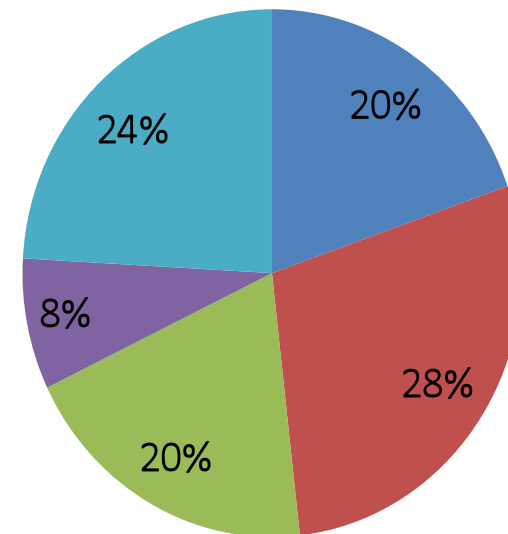
Total # Patients: 112

■ Male ■ Female

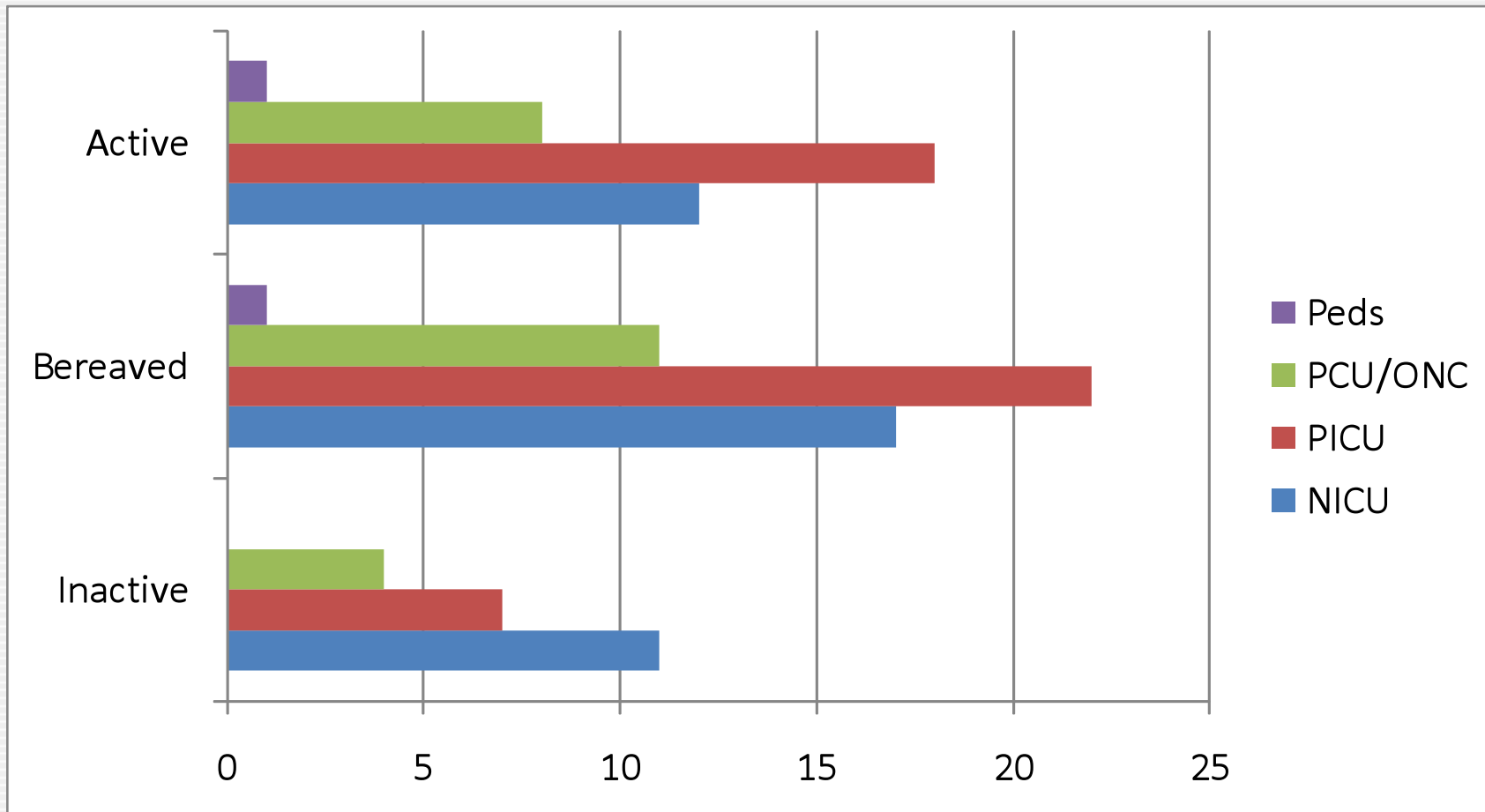


Diagnosis Type

■ Brain Injury
■ Genetic
■ Cancer
■ Premature



Current Children's Care Team Patients: Referring Units



Florida Hospital for Children “Connected Care” Programs and Clinics



**A BEST PRACTICE APPROACH FOR
BALANCING COST AND COMPASSION FOR
CHILDREN WITH SPECIAL HEALTH CARE
NEEDS**

Connected Care Programs and Clinics

Inpatient/Outpatient Support

Multidisciplinary Clinics

Palliative Care
(Life-Threatening)
Perinatal &
Pediatrics

Chronic/Complex
(Life-Limiting/
Recoverable)

Neurofibromatosis

Neuro Oncology

Craniofacial

Asthma

Advance Care
Planning

Pain Management
Program

Care Coordination

NICU Follow Up

Chronic/Complex

Short Term DC
Follow Up Clinic

Fetal Care
Coordination
Program

BPD
(Chronic Lung
Disease)

Short-Bowel
Syndrome

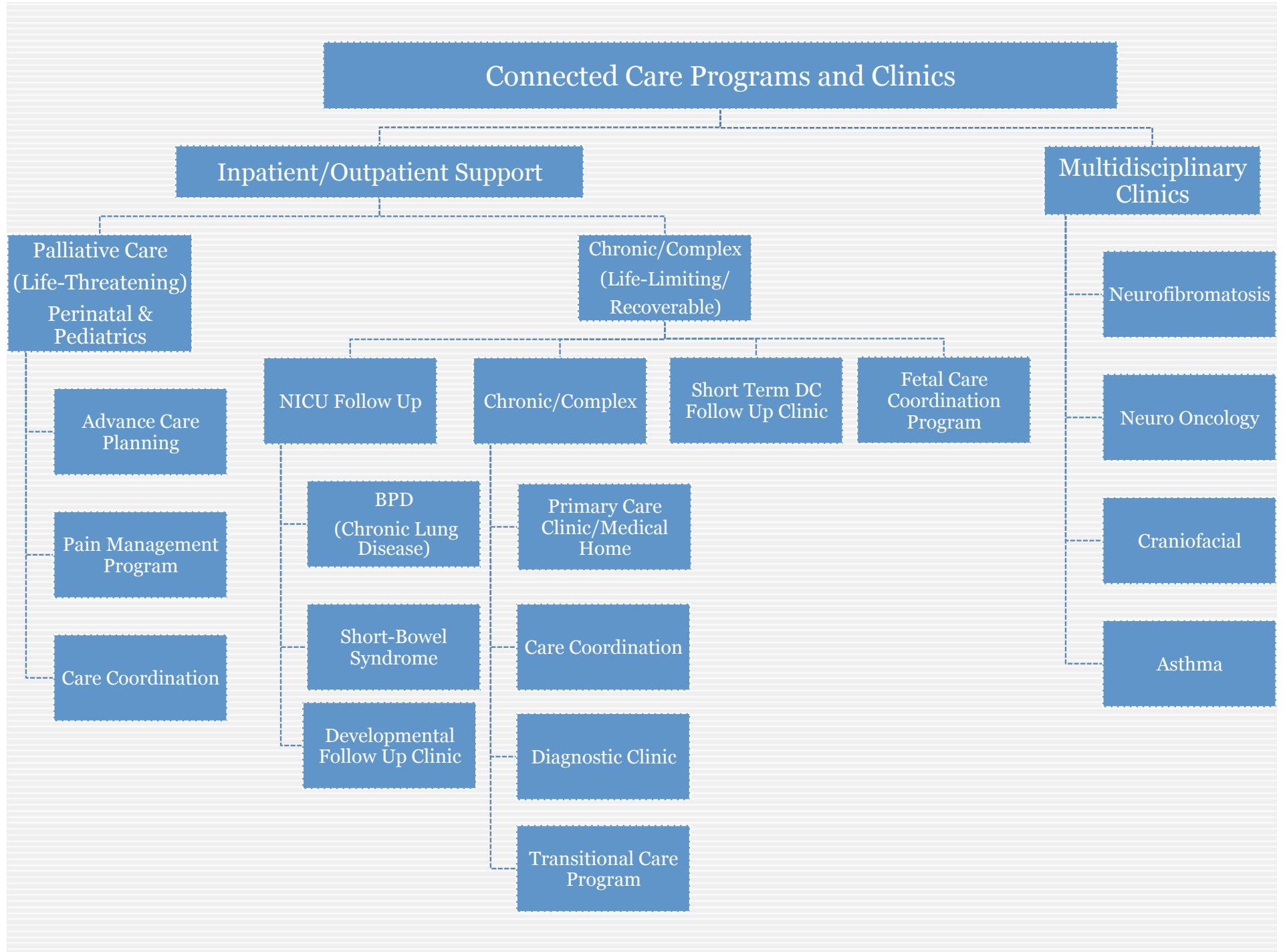
Developmental
Follow Up Clinic

Primary Care
Clinic/Medical
Home

Care Coordination

Diagnostic Clinic

Transitional Care
Program



Success



Ensuring Children with Special Health Care Needs receive accessible, continuous, comprehensive, family centered, coordinated, compassionate, and culturally effective health care¹

Program Metrics:

- Cost Savings:
- Reduced LOS
- Reduced readmissions
- Reduced ED visits
- Lower Acuity (Step Down)

- Increased Patient/Family Satisfaction
- Increased Referring Physician Satisfaction

Connected Care Team- Phase I



- Medical Leaders:
 - Dr. Ben Guedes, MD
 - Dr. Stacy McConkey, MD
- Program Leader:
 - Jessica Galo, MSW
- Staff To Be Added:
 - Nurse Practitioner
 - Social Work Care Coordinator
- Anticipated Growth Phase I:
 - RN Care Coordinator
 - Data Coordinator

Connected Care Programs and Clinics



- Phase I:
 - Complex Care Program
 - ✦ Fetal Care Coordination Program
 - Palliative Care Program Expansion
 - Existing Multidisciplinary Clinics
 - ✦ Neurofibromatosis, Neuro Oncology, Craniofacial
- Phase II:
 - Transitional Care Program
 - Short-Term Discharge Follow Up Clinic
 - NICU Developmental Clinic
- Phase III:
 - Pain Management Program
 - Diagnostic Clinic
 - Asthma Clinic

Referral Criteria



21 years of age and under

Condition expected to last longer than
one year

Condition requiring more than one
subspecialist

Connected Care Programs and Clinics Total Patient Volume Estimates:



Estimated Total # Patients Year 1 through 3 *

- Complex Care Program: 100-400
- Palliative Care Program: 105-430
- Multidisciplinary Clinics: 445- 775

Total Patients Enrolled in
Connected Care Programs and Clinics:

Current-Year One: 650

Year Three: 1,605

* See Supporting Documents (next 3 slides)

Patient Volume: Complex Care Program*



- St. Joseph's Children's Hospital Tampa Florida
Chronic Complex Clinic
- Opened in 2000
- Year One: 200 patients
- Current Number Patients: 1200
- Average: ~ 100/year
- Referral Criteria: 2 + medically complex diagnoses

* Fetal Care Coordination Program Numbers Not Included

Patient Volume: Palliative Care*

Year 1

- Existing:
 - 40 (active)
 - 50 (bereaved)
 - 22 (inactive)
- New:
 - 1% of pediatric admissions
 - 65 new referrals
- Total: 105

Year 2

- Existing:
 - 105
- New:
 - 2 % of pediatric admissions
 - 130 new referrals
 - Assume ~ 50% Y1 Bereaved (50)
- Total: 185

Year 3

- Existing:
 - 185
- New:
 - 3 % of pediatric admissions
 - 195 new referrals
 - Assume ~ 50% Y1&2 Bereaved (90)
- Total: 290

Total volume over 3 years = 430 patients

*Numbers based on Center To Advance Palliative Care Patient Volume Estimator

Patient Volume: Multidisciplinary Clinics

NF

- Existing:
 - 280 (2012)
- Average: 60 new/ year

- Year 1:
 - 340
- Year 2:
 - 400
- Year 3:
 - 460

NeuroOnc

- Existing:
 - 100 (2012)
- Average: 10 new/ year

- Year 1:
 - 110
- Year 2:
 - 120
- Year 3:
 - 130

CF

- Existing:
 - 65 (2012)
- Average: 40 new/ year

- Year 1:
 - 105
- Year 2:
 - 145
- Year 3:
 - 185

Total volume over 3 years = 775 patients*

*Asthma Clinic Numbers Not Included

1.0 FTE Connected Care Programs and Clinics Manager

Additional Staff Support Needed:

Phase I

- Number of Patients:
 - **500-1,000**
- Staff Needed
 - 1.0 FTE ARNP
 - 2.0 FTE RN and SW Care Coordinator
 - .50 FTE Admin/Data Coordinator
 - Dedicated MD Coverage
 - FPA and Residency Program

Phase II

- Number of Patients:
 - **1,000-1,500**
- Staff Needed
 - 2.0 FTE ARNP
 - 3.0 FTE RN or SW Care Coordinator
 - .50 FTE Admin/Data Coordinator
 - Dedicated MD Coverage
 - FPA and Residency Program

Phase III

- Number of Patients:
 - **1,500 +**
- Staff Needed
 - 3.0 FTE ARNP or 2.0 FTE ARNP with 0.5 FTE MD
 - 4.0 FTE Care Coordinator
 - 1.0 FTE Data
 - .5 FTE Bereavement Coordinator
 - .5 FTE Child Life Specialist
 - Continued MD Coverage- FPA/Residency